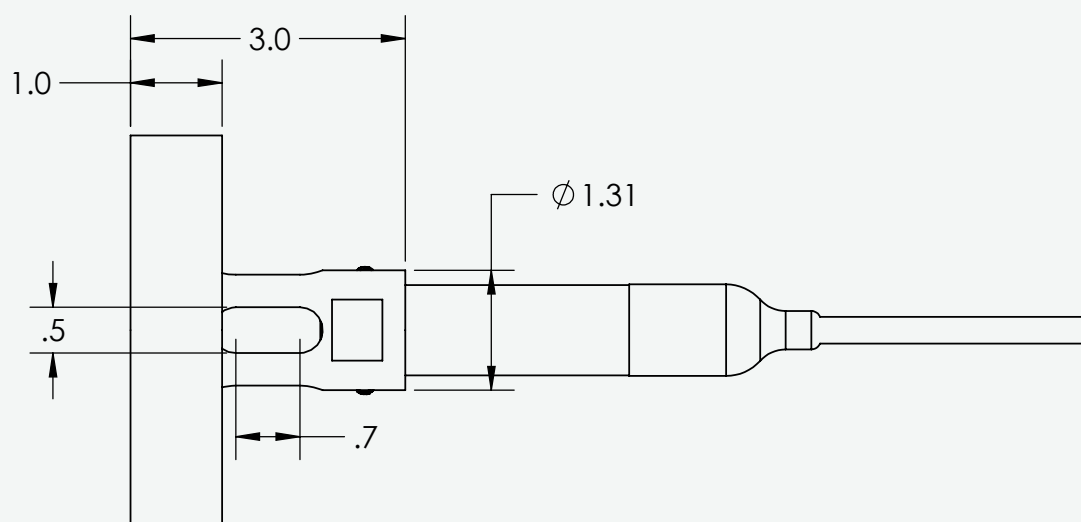


The All New SW2100 SINK WEIGHT



Secure the VL2000 Wastewater Depth/Level Transmitter in lift station wet wells and other wastewater applications where there is significant turbulence.

- Made of corrosion-resistant stainless steel
- Clog-free operation in sewage and other slurries
- Reusable, field-replaceable, and cost efficient
- Simple installation



There are many ways to secure your VL2000 Series Depth/Level Transmitter. Popular methods include installing the transmitter in a stilling well, using the optional ½" NPT male conduit connection, attaching the sensor to existing infrastructure, or using a sink weight. Simply connect the VL2000 transmitter to the SW2100 sink weight using the two set screws (included) and drop it into the wet well.