

Process Measure Control

WELLHEAD/TOPSIDE PRESSURE TRANSMITTER VERSALINE VT1000 SERIES

The PMC **VT1000 Series** transmitters are specifically designed to work alongside our VL submersible series for Topside Measurements of a wide range of water related applications for measurements of ground, surface, waste, sea water and oceanography. Typical applications for the VT series are bubbler systems, well head pressures, line pressures, packers, pump monitoring and injection well monitoring/control. Both stainless steel and titanium construction are available.

A wide range of electrical terminations are available, including polyurethane vented cable normally fitted to the submersible versions. FEP cable is available as an alternate for harsh environments. A feature of the VT1000 Series is the ability to provide high performance for ranges as low as 30" WC and up to 15,000 psi. Both 4-20mA and low powered VDC outputs are available.

Features

- Accuracy 0.1% std. 0.05% available
- Ranges 1 - 15,000 psi
- Gauge, abs. or diff.
- -40 to 255 °F
- 4-20mA or 0-5 VDC

TECHNICAL SPECIFICATIONS

Full Scale Ranges (Zero Based)	0-1, 5, 10, 50, 150, 500, 1000, 5000, 10000 psig 0-5, 10, 50, 150, 500, 1000, 5000, 10000 psia 0-1, 5, 10, 15, 30, 50 psid
Accuracy-Static	±0.05% (option) ±0.1% (standard) or ±0.25% (option) <i>Non-linearity, hysteresis, repeatability, zero & span settings.</i>
Accuracy-Total Error Band	TEB without optional active compensation ±0.8% for 32 to 160°F, ≤ FS 7.25 psi ±1.3% for -15 to 212°F, ≤ FS 7.25 psi ±0.3% for 32 to 160°F, > FS 7.25 psi ±0.75% for -15 to 185°F, > FS 7.25 psi TEB with optional active compensation ±0.5% for 32 to 160°F, ≤ FS 7.25 psi ±1.0% for -15 to 212°F, ≤ FS 7.25 psi ±0.2% for 32 to 160°F, > FS 7.25 psi ±0.5% total for -15 to 185°F, > FS 7.25 psi
Overpressure (Proof Pressure)	FS up to 15 psi: 45 psi FS > 15 psi up to 4,000 psi: 3 x FS FS > 4000 psi up to 9000 psi: 12,000 psi FS > 9000: 22,000 psi Consult factory for higher proof pressure
Operating Temperature Range	-40° to +255° F (See fig. 2 for 300°F)
Compensated Temperature Range	+32 to 160°F (standard) -15 to 212°F (option) -40 to 212°F (option) -40 to 255°F (option with active compensation)
Electrical (either)	2-wire, 4-20 mA output, 9-33 VDC supply
Electrical Terminations	6-pin bayonet (10-6 pin layout), DIN connector, polyurethane or FEP cable (see drawings) <i>Others available</i>
Pressure Connections	1/4" NPT (male or female) 7/16-20 UNF-2A male (AN-4) <i>Others available</i>
Housing	316L Stainless Steel or Titanium with 5-year corrosion warranty
Weight (excluding cable)	4.5 oz. (excluding cable)

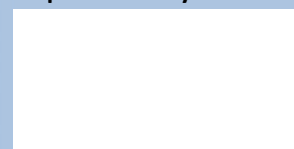
Applications

- Wellhead
- Bubbler Systems
- Pump Monitoring
- Ground/Surface water
- Sea Water

Contact

PMC Engineering LLC
11 Old Sugar Hollow Rd
Danbury, CT 06810
USA
sales@pmc1.com
Tel: 203-792-8686
Fax: 203-743-2051
www.pmc1.com

Represented by:



PMC Engineering adopts a continuous development program which sometimes necessitates specification changes without notice

Your depth and level specialists for Ground, Surface, Sea and Waste Water

PMC Configurator

VT X X X X

Model Construction	0.94" dia. with process connection	1
Housing Material	316L Stainless Steel	1
	Titanium-5yr corrosion warranty	2
Electrical Connection	Polyurethane Molded Cable	1
	FEP Cable	2
	Electrical Connector (specify type)	5
	Cable length must be specified at the time of ordering.	
Electrical Output Type	0-5 or 0-10V (specify)	2
	4-20 mA loop powered	3
Additional Information Required	(1) Pressure Range including engineering units (2) Specify gauge, absolute or differential (3) Accuracy (0.1% standard) (4) Compensated Temperature Range (32 to 160°F standard) (5) Pressure connection type (i.e. ¼" NPT male) (6) Electrical connector type (if required) (7) 0-5 or 0-10 VDC output (if required)	
Example Ordering Format: VT1123 - 5psi - 0.1% - 32 to 160°F - 20' cable - ¼" NPT female		

RELATED PRODUCTS

In addition to this product PMC specializes in offering a wide range of submersible sensors for depth and level applications. For example the VersaLine **VL4000** and **MTM3000** offer similar performance with 3/4" and 3/8" diameter housings respectively suitable for deeper or smaller well installations. The **VL2000** provides an open face construction avoiding clogging or sludge build up in wastewater and similar applications. PMC manufactures a wide range of other level transmitters including flush designs for use in water and wastewater management, food and beverage, pulp and paper, and pharmaceutical applications. Please refer to appropriate data sheets.

MECHANICAL DETAILS

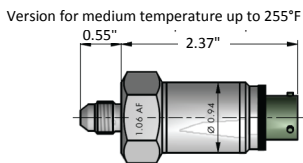


Fig. 1

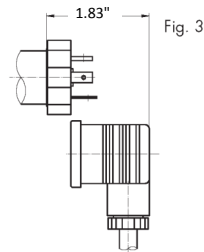


Fig. 3

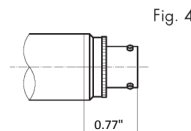


Fig. 4

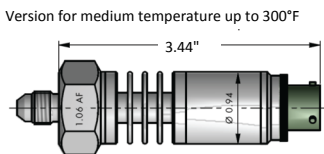


Fig. 2

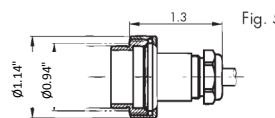


Fig. 5

Dimensions in inches

ELECTRICAL DETAILS

Configuration	+Ve Supply	0V Supply	+ Ve Output	- Ve Output	Ground
4-20mA	Red	Black			Green
0-5VDC/0-10VDC	Red	Black	Yellow	Black	Green

Note: For VT1000 Series supplied with electrical connector-See details supplied with transmitter

Process Measure Control

Sensors for

- Pressure
- Level
- Vacuum
- Humidity
- Temperature
- Force
- Position

Accessories

PMC offers a range of Accessories and variants for depth and level transmitters. Reference sheet VLA502

- Termination Enclosure
- Cable Hanger
- Moisture Protection
- Calibration Adaptor
- FM Certification
- Level Meters

PMC is

- Engineering Driven
- Confidential
- Experienced
- Responsive
- Dynamic
- Friendly

Your depth and level specialists for Ground, Surface, Sea and Waste Water