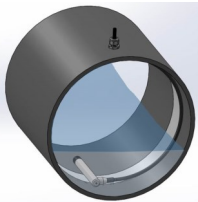


Process Measure Control

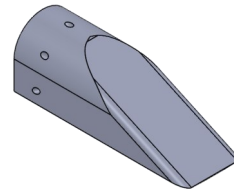
DEPTH & LEVEL TRANSMITTER - SIDE ENTRY CABLE

PMC has engineered a rugged side entry cable with optional wedge nosecone to facilitate the use of their submersible transmitters inside pipes where the level measurement is required under flowing conditions. This is offered as a standard option for "4" inch diameter transmitters but can also be provided for other series. This combination is ideally suited for installations into sewer pipes to minimize flow restrictions and possible clogging.

The Titanium housing provides immunity to virtually all environments, including brackish or sea water, or other chemicals unsuitable for stainless steel. The polyurethane vented cable is molded to the transmitter providing the highest integrity waterproof assembly, proven in thousands of installations worldwide.



A feature of the VL4500 Series is full scale ranges as low as 30" WC. and featuring a highly stable Piezoresistive element manufactured from micro- machined silicon and supported by more than 20 years' experience in depth and level applications.



Features

- 0-100 mV or 4-20 mA
- 0.1% / 0.25% accuracy
- 0-30" WC to 0-300 psi
- 0.725" Ø Titanium
- five year warranty
- 90° cable
- CE

TECHNICAL SPECIFICATIONS

Full Scale Ranges (Zero Based)	0-30, 50" WC 0-1, 5, 10, 15, 30, 50, 100, 150, 300, 500 psig 0-50, 100, 150, 200, 300 psia
Accuracy	±0.1% FS (BSL) or ±0.25% FS (BSL) <i>Combined non-linearity, hysteresis & repeatability</i>
Overpressure	Full scale ranges up to 20 psi - >10X Full scale ranges above 20psi up to 150 psi - >4X Full scale ranges above 150 psi - >2X
Operating Temperature Range	-5° to 175°F (-20° to +80°C) - non freezing
Compensated Temperature Range	30° to 85°F (-2° to +30°C)
Temperature Effects (Compensated)	High accuracy (±0.1%) ±0.3% TEB for ranges 5 psi and above ±1.0% TEB for ranges below 5 psi
Electrical (either)	4-wire bridge: supply voltage: 1-15VDC Output: 5mv/V typical, ratiometric with supply. <i>Contact factory for exact output of each range.</i> Input Impedance: >10k ohm, Bridge: 3k ohm typical 2-wire, 4-20mA, 10-35 VDC power
Intrinsically Safe Approvals	For FM/FMC Class I, II, and III Div. 1 Groups A-G <i>Please refer to VL2000, VL3000 and VL4000</i>
Cable – up to 5000ft in single length	Polyurethane molded, vented with Kevlar, 4 conductors
Housing	Titanium with 5-year corrosion warranty <i>For 316 Stainless Steel Contact the factory.</i>
Weight (excluding cable)	VL45x1 - 4.5 oz. VL45x3 – 6.5oz

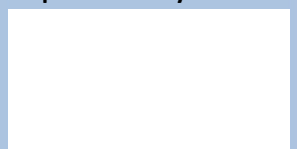
Applications

- Sewer Monitoring
- Water Level
- Waste Water
- Oceanography
- Ground Water

Contact

PMC Engineering LLC
11 Old Sugar Hollow Rd
Danbury, CT 06810
USA
sales@pmc1.com
Tel: 203-792-8686
Fax: 203-743-2051
www.pmc1.com

Represented by:



PMC Engineering adopts a continuous development program which sometimes necessitates specification changes without notice

Your depth and level specialists for Ground, Surface, Sea and Waste Water

PMC Configurator

VL x x x x

Model Construction	Depth Cone	4	
Housing Material	Titanium - 5 year warranty	5	
Electrical Connection	Polyurethane molded cable 90° FEP cable - 90° (refer to PMC) Add -FEP Cable length must be specified at the time of ordering.	6	
Electrical Configuration	4 wire bridge ratiometric 4-20 mA	1 3	
Options	For Wedge Nose - Please specify WN1 in order code		

Example Ordering Format: VL4563 - 15psi - 45' cable (for FEP cable, add -FEP)

RELATED PRODUCTS

In addition to this product PMC specializes in offering a wide range of submersible sensors for depth and level applications. For example the VersaLine **VL4000** and **MTM3000** offer similar performance with 3/4" and 3/8" diameter housings respectively suitable for deeper or smaller well installations. The **VL2000** provides an open face construction avoiding clogging or sludge build up in wastewater and similar applications. PMC manufactures a wide range of other level transmitters including flush designs for use in water and wastewater management, food and beverage, pulp and paper, and pharmaceutical applications. Please refer to appropriate data sheets.

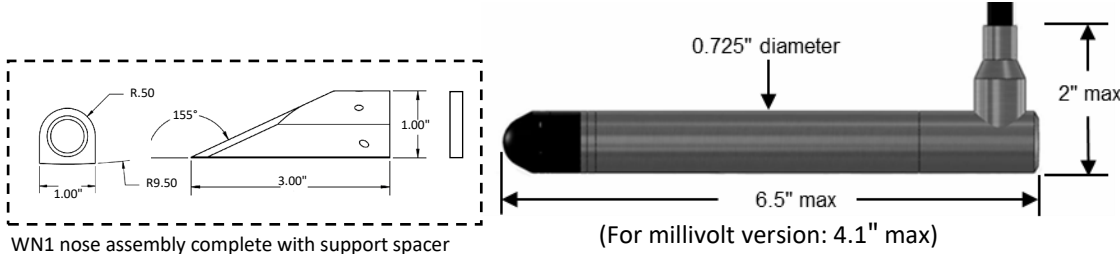
FOR ZERO MAINTENANCE



In order to reduce on site maintenance PMC has developed the MP 11 Moisture Protection Reference Volume. For vented gauge transmitters this provides a total isolation to the atmosphere by using a custom bladder while maintaining the high performance of the transmitter. This changes volume with Barometric pressure. Totally maintenance free. Please specify MP 11.

MECHANICAL DETAILS

Dimensions in inches



ELECTRICAL DETAILS

Configuration	+V Supply	0V Supply	+V Output	-V Output	Ground (case)
4-20mA	Red	Black			Green
Millivolt	Red	Black	Yellow	Green	Drain wire

Process Measure Control

Sensors for

- Pressure
- Level
- Vacuum
- Humidity
- Temperature
- Force
- Position

Accessories

PMC offers a range of Accessories and variants for depth and level transmitters. Reference separate data sheet.

- Termination Enclosure
- Cable Hanger
- Moisture Protection
- Calibration Adaptor
- Sink Weights
- Level Meters

PMC is

- Engineering Driven
- Confidential
- Experienced
- Responsive
- Dynamic
- Friendly

Your depth and level specialists for Ground, Surface, Sea and Waste Water