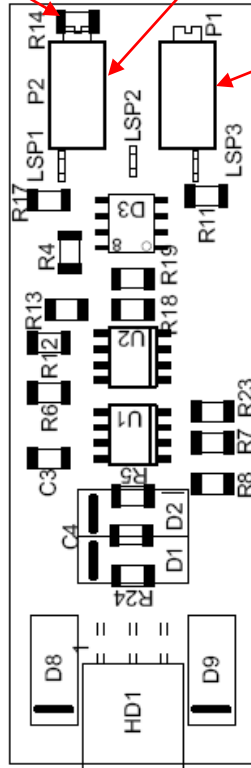




# PMC Engineering LLC

(Formerly Process Measurement & Controls, Inc.)  
 11 Old Sugar Hollow Road, Danbury, CT 06810 U.S.A.  
 Tel: (203) 792-8686 Fax: (203) 743-2051  
 Website: www.pmc1.com Email: sales@pmc1.com

R14 Gain resistor      Span potentiometer      Zero potentiometer



R14 45K ohms	100% to 64% of sensor range
R14 30K ohms	80% to 47% of sensor range
R14 15K ohms	56% to 33% of sensor range
R14 0 ohms (link)	33% to 22% of sensor range

(Resistor is SMT size 1206)

“Sensor range” is written on the sensor body under the sensor housing.

Example: Slimline sensor purchased as a 0.5bar range (R14 = 15K). Sensor body marked as 1b (1 bar). Require a range of 0.7bar. Change R14 to 30K and reset zero and span.

### Instructions for setting or changing output gain.

1. Use the zero and span potentiometers to adjust zero (4mA) and span (20mA) output signal.
2. If the required span setting is outside the range of the span pot. Change the gain resistor on the PCB to allow setting the proper range.
3. To change the gain requires changing R14 resistor value as shown on the chart above.