



SPC SERIES FLANGED SPEED SENSOR

The SPC Series of flanged speed sensors have been designed as simple compact sensors suited to the demanding motorsport and on-vehicle automotive testing applications.

The main construction is aluminum which provides for a rugged sensor, even in exposed areas such as the engine bay or wheel hub. The sensor will continuously operate at temperatures up to 300°F.

By using a proven 'Hall Effect' technology, the SPC detects a change in magnetic field as the target passes the sensors tip. The output transistor switches its state as the target passes, so giving a measurable pulse train which can be used within standard data logging equipment or ECU's.

Sensors For Motorsport

Features

- Miniature Size
- Single or Dual Flange
- NPN Output
- 5 - 24Vdc Supply
- IP67 Sealed

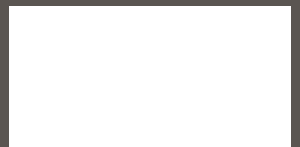
TECHNICAL SPECIFICATIONS

Measurement Frequency	8KHz
Sensor Type	Hall Effect
Mounting	Single Flange: Flange with Single Screw Fitting Dual Flange: Flange with Double Screw Fitting
Target Size (Width x Length)	0.31" Wide x 0.04" Long
Sensing Range (Air Gap)	0.04" to 0.12"
Output	NPN. Internal Pullup Resistor Value 10KΩ
Max Load Current	25mA Max
Power Supply	5-24 Vdc (10mA)
Operating Temperature Range	-40°F to +300°F (-40°C to +150°C)
Construction	Anodized Aluminum
Electrical Connection	Please See Part Number Configurator - page 2
Cable Exit	Straight or Right Angle
Mechanical Dimensions	See Part Number Configurator & Drawings - page 2
Protection Class	IP67
Vibration Protection	5KHz Sine at 100g
Weight (Excluding Cable)	Single Flange: 0.28oz Dual Flange: 0.35oz
Options	Cable Spec, Connection Options and Labelling

Applications

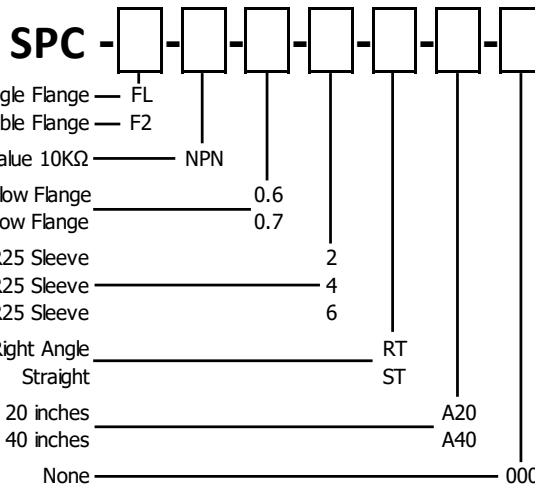
- Speed
- Crank Speed / Position
- Wheel Speed
- Drive Shaft Speed
- Traction Control
- Launch Control

sales@pmc1.com
www.kasensors.com
Represented by:



PMC/KA Sensors adopts a continuous development program which sometimes necessitates specification changes without notice

PART NUMBER CONFIGURATOR



Flange

Output

Sensor Length 0.551" x 0.352" (14mm x 8.95mm) Ø Below Flange
0.709" x 0.354" (18mm x 9mm) Ø Below Flange

Electrical Connection

22AWG 55spec Cable + DR25 Sleeve
24AWG 55spec Cable + DR25 Sleeve
26AWG 55spec Cable + DR25 Sleeve

Cable Exit

90° Right Angle
Straight

Cable Length

20 inches
40 inches

Special Code

None

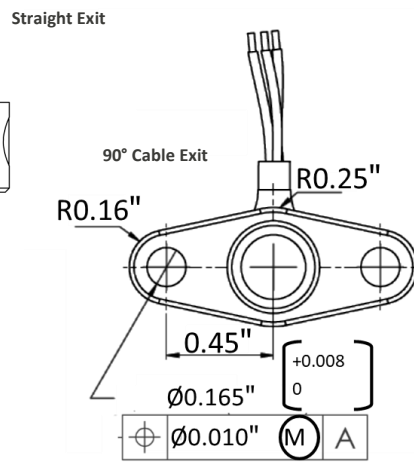
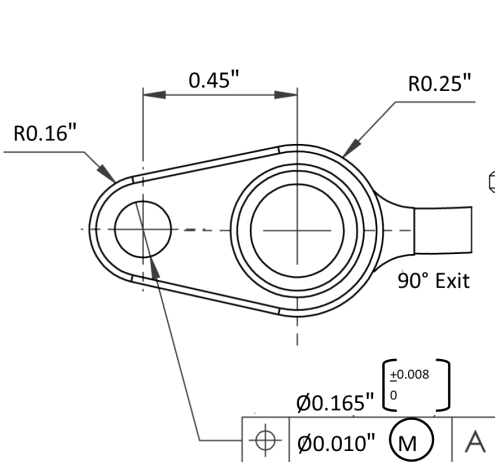
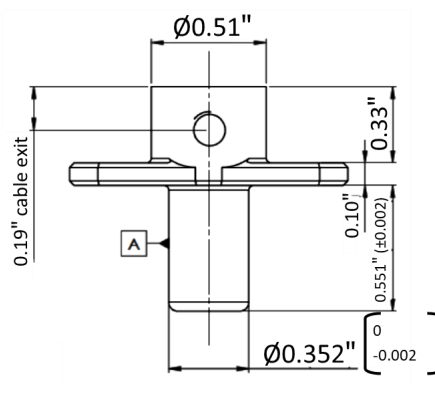
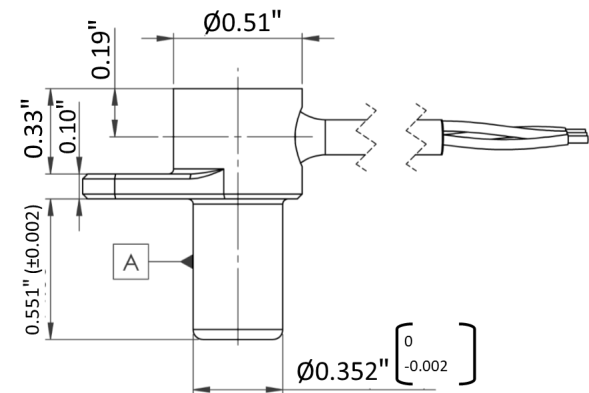
The KA configuration tool is used to specify a standard KA Sensor, other options are available.

MECHANICAL DETAILS

Single Flange

Dimensions in inches

Dual Flange



*Sense
Analyze
Control*

Sensors For:

- Temperature
- Acceleration
- Pressure
- Position
- Torque
- Speed
- Angle
- Force

Services For:

- Data Logging
- Telemetry
- Controls
- Wiring

Contact Us

KA Sensors
Division of
PMC Engineering LLC
11 Old Sugar Hollow Rd
Danbury, CT 06810
USA

Tel: 203-792-8686

Fax: 203-743-2051

sales@pmc1.com

www.kasensors.com

ELECTRICAL DETAILS

+Ve Supply	0V Supply	Signal
Red	Black	White