

ATM.mini process connections

Fig. 1 - M8 x 1 M

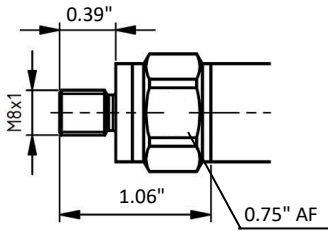


Fig. 2 - M10 x 1 M

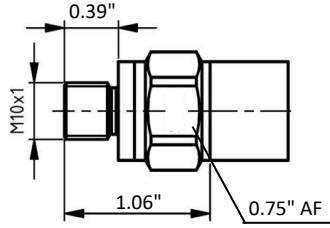


Fig. 3 - G 1/4 M

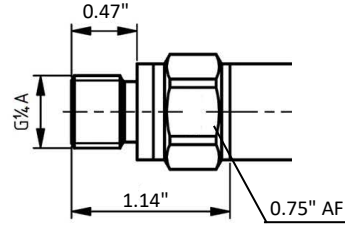


Fig. 4 - G 1/8 M

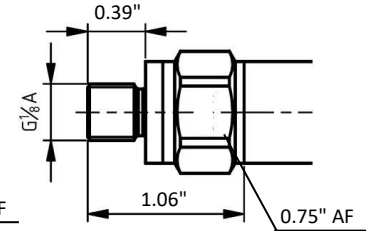


Fig. 5 - 1/8 NPT M

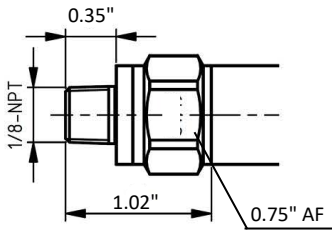


Fig. 6 - 3/8-24 UNJF-3A

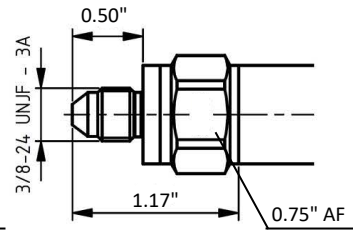
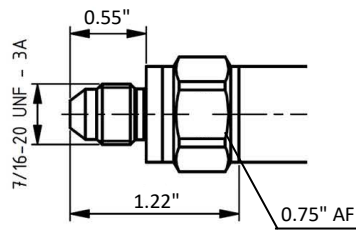


Fig. 7 - 7/16-20 UNF-3A



ATM.mini electrical connections

Connector for absolute or sealed gauge version

Fig. 10 - M12x1, 4 pins (Lumberg RSF4)

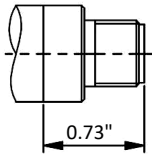


Fig. 11 - Mini DIN (9.4 mm)

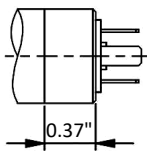
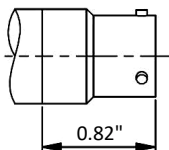


Fig. 12 - MIL C26482, 10-6



Connector for gauge version

Fig. 10 - M12x1, 4 pins (Lumberg RSF4)

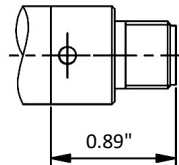


Fig. 11 - Mini DIN (9.4 mm)

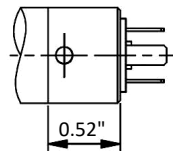
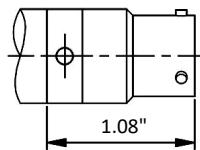


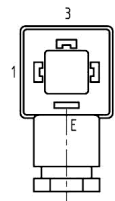
Fig. 12 - MIL C26482, 10-6



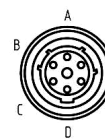
View to cable socket connector



Pin	2-Leiter	3-Leiter
1		GND
2		
3	Pout	Pout
4	+Vin	+Vin



Pin	2-wire	3-wire
1	+Vin	+Vin
2	Pout	Pout
3		GND
E		



Pin	2-wire	3-wire
A	+Vin	+Vin
B		GND
C	Pout	Pout
D		
E		
F		