

S904 Climate Chamber

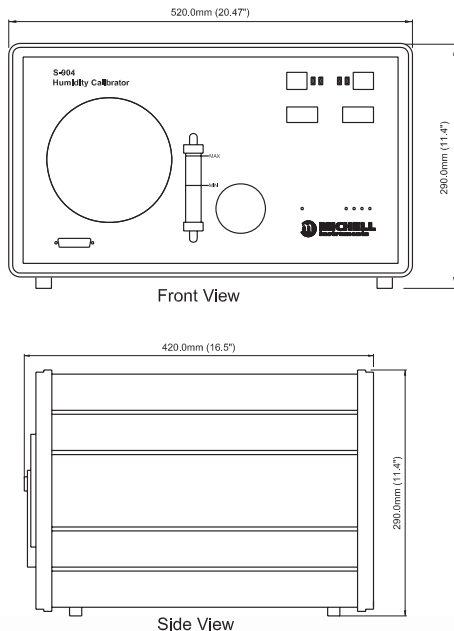


The S904 Climate Chamber generates a stable and accurate RH at various temperatures, permitting calibration and verification of relative humidity sensors and transmitters. With a chamber temperature range of 10 to 50°C / 50 to 122°F, a uniformity of ±0.1°C / 0.02°F and the ability to generate 10–90% RH, accurate and repeatable calibrations are made easy.

Highlights

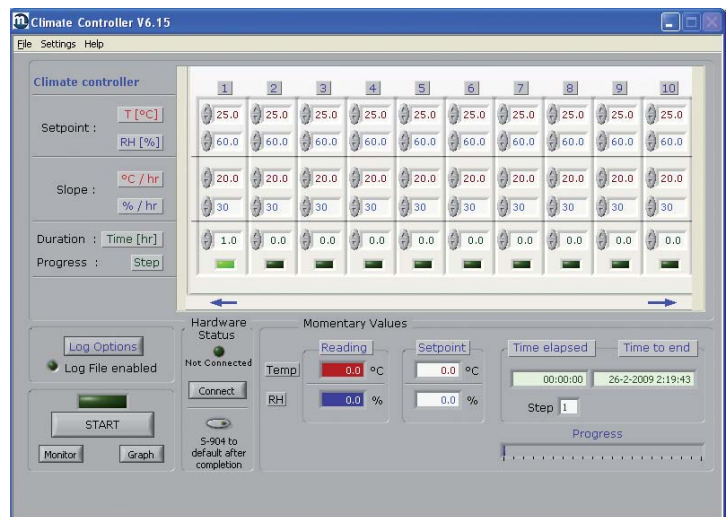
- Excellent stability within chamber: ±0.2% RH, Temp. ±0.1°C / 0.18°F
- Optional in-built data-logging for reference probe and probes under calibration
- Probes up to ø 1" / ø 25 mm can be accommodated

Dimensions



Technical Specifications

Humidity	
Generator range	10–90% RH
Accuracy	±2% RH
Stability	±0.2% RH (20–80% RH)
Temperature	
Generator range	10 to 50°C / 50 to 122°F (lowest T set point = 10°C / 18°F below ambient)
Accuracy	±0.1°C / ±0.2°F
Stability	±0.1°C / ±0.2°F
Chamber	
Ramp rate from 20 to 40°C / 68 to 104°F	1.5°C/minute / 2.7°F/minute
40 to 20°C / 104 to 68°F	0.7°C minute / 1.2°F/minute
Control element	Removable relative humidity sensor
General	
Probe ports	up to 5 – sensor body diameters up to 25mm / 98" accommodated by port adapters
Chamber volume	122 in ³ / 2000 cm ³
Chamber dimensions	4.13 x 4.13 x 6.3" / 105 x 105 x 160mm (w x h x d)
S-904 dimensions	20.5 x 11.4 x 16.5" / 520 x 290 x 420mm (w x h x d)
Set point resolution	0.1 for humidity and temperature
Displays	3 digit LED, 0.39" / 10mm characters
Supply	85–264 VAC, 47–63 Hz, 150 VA
Weight	44lb / 20kg



LabVIEW logging software

Accessories and spare parts

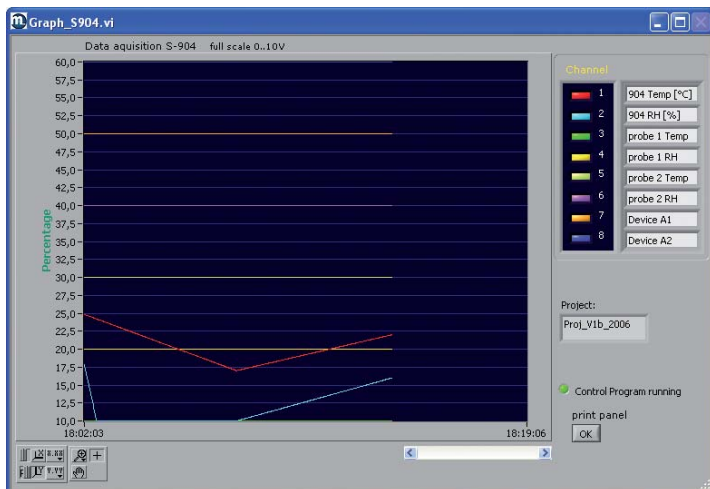
Door kit with 1 x \varnothing 19.0mm / \varnothing 0.79" port	A000260
Door kit with 5 ports. 5 adapters to be specified	A000263
Door kit with 5 ports and 25 port adaptors: 5x \varnothing 19.0mm / \varnothing 0.75"; 4x \varnothing 12.0mm / \varnothing 0.47"; 4 x 13.5mm /0.53", 4 x 15.0mm/0.59", 4 x 18.5mm/0.73", 4 x 24.0mm/ 0.94" adaptors and plugs. Adapter tool included.	A000264
Door with clear window - no ports	A000266
Door without ports	A000268
Door kit for use with MI Optidew. Optidew dew-point sensor port adapter, PRT port adapter, 4 standard port adapters (\varnothing 19.0mm / \varnothing 0.75"). Adapter tool included.	A000269
Molded polymer housing port adapter & plug blank (for customer modification)	A000290
Special modified port adapters \varnothing client specific	A000290X
\varnothing 12.0mm / \varnothing 0.47" port	A000291
Molded polymer port (M30x1) & plug	
\varnothing 13.5mm / \varnothing 0.53" port	A000292
Molded polymer port (M30x1) & plug	
\varnothing 14.0mm / \varnothing 0.55" port	A000293
Molded polymer port (M30x1) & plug	
\varnothing 15.0mm / \varnothing 0.59" port	A000294
Molded polymer port (M30x1) & plug	
\varnothing 18.5mm / \varnothing 0.73" port	A000295
Molded polymer port (M30x1) & plug	
\varnothing 19.0mm / \varnothing 0.75" port	A000296
Molded polymer port (M30x1) & plug	
\varnothing 24.0mm / \varnothing 0.94" port	A000297
Molded polymer port (M30x1) & plug	
\varnothing 25.0mm / \varnothing 0.98" port	A000298
Molded polymer port (M30x1) & plug	
Tool for M30X1 Aluminum Ports	A000265
Control sensor	HT961

Order codes

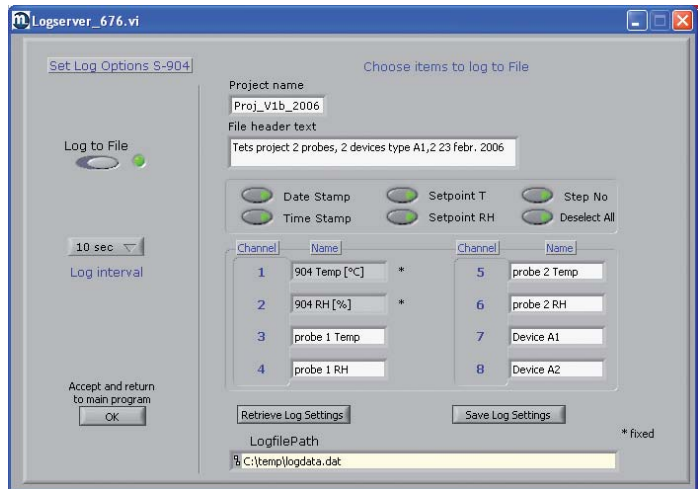
Calibrator with humidity and temperature controlled chamber.	S904
S904 calibrator with RS232 / USB interface, data-logging software for PC (6 channel data-logger)	S904-D

1. S904 set point temperature (0 to 10 V = 0 to 100°C / 32 to 212°F)
2. S904 set point RH (0 to 10 V = 0 to 100% RH)
3. Free to use (0 - 10 V)
4. Free to use (0 - 10 V)
5. Free to use (0 - 10 V)
6. Free to use (0 - 10 V)
7. Free to use (0 - 10 V)
8. Free to use (0 - 10 V)

The acquisition system only measures 0 to 10 V on every channel so the 4 to 20 mA signals from the Optidew are converted to a 0 to 10 V signal. Channels 1 and 2 are not available for logging signals. A 500 Ω resistor must be used.



LabVIEW logging software



LabVIEW logging software

Please note: Michell Instruments adopts a continuous development program which sometimes necessitates specification changes without notice. Please contact us for latest version. Ref: S904_1001US_P



Process Measurement & Controls, Inc. Email: sales@pmc1.com
 Michell Instruments RH Web: www.michell.com/us/rh
 11 Old Sugar Hollow Road Tel: 203-792-8686
 Danbury, CT 06810 USA Fax: 203-743-2051

Represented by: